



IPA Photography Contest 2021

Winner:

Francesco Malfasi (Università degli studi dell'Insubria, Italy)
Frost hummocks along the south coast of Saunders Island (Falkland Islands). February 2017.



Runners-up:

Luwig Jardillier (Université Paris-Saclay)
Thawing of permafrost from a burst pipe, Yakutia,
Republic of Sakha, Siberia. August 2019.



David Olefeldt (University of Alberta, Canada)
Rapidly expanding thermokarst wetlands within a
peatland complex, near Wrigley along the
Mackenzie River, NT, Canada. May 2019.



EXECUTIVE COMMITTEE

President:

Prof. Christopher Burn

Vice-Presidents:

Dr. Isabelle Gärtner-Roer

Dr. Gonçalo Vieira

Members:

Dr. Kjersti Gislén

Prof. Michael Krautblatter

Prof. Yuangming Lai

Prof. Frederick "Fritz" Nelson

INTERNATIONAL SECRETARIAT

Executive Directors:

Emma Stockton & Jen Humphries

Carleton University

Dept. Geography & Environmental Studies

1125 Colonel By Dr.

Ottawa, ON, Canada

K1S 5B6

contact@ipa-permafrost.org

www.permafrost.org

2021 entries



Joana Baptista (Université Laval, Canada)

"Barton Plateau" Barton Peninsula (King George Island, Antarctica). February 2020.



Joana Baptista (Université Laval, Canada)

"Patterned Ground" Barton Peninsula (King George Island, Antarctica). February 2019.



Nick Brown (NSERC PermafrostNet, Canada)

Sunset after a cold day in the field, Northwest Territories, Canada.



Nick Brown (NSERC PermafrostNet, Canada)

Rock glaciers and cold-based glaciers on the Northwest face of Machhapuchhre, Nepal.



Nick Brown (NSERC PermafrostNet, Canada)

A periglacial landscape near Pangnirtung, Canada.



Sam Cornish (University of Oxford)

Serpentine channel, Mackenzie Delta, NT, Canada. 25 July 2015.



Sam Cornish (University of Oxford)

Return from Richards Island, Tuktoyaktuk, NT, Canada. 25 August 2015.



Viktor Kaufmann (Graz University of Technology, Austria)

The tongue of the Tschadinhorn Rock Glacier (Schober Mountains, Hohe Tauern National Park, East Tyrol, Austria). 25 August 2016.



Sam Cornish (University of Oxford)

Collapsed pingo, Tuktoyaktuk, NT, Canada. 25 August 2015.



Matthias Fuchs (AWI, Germany)

Nicely layered organic-rich permafrost core at 168-183 cm depth from the Ikpikpak River Delta, Arctic Coastal Plain, Northern Alaska. 15 July 2015.



Kewei Huang (Chinese Academy of Sciences)

A fox showed up during the beginning of frozen season at the Fenghuoshan watershed (4714 m.a.s.l.). 24 October 2017.



Matthias Fuchs (AWI, Germany)

Flight over low-center polygons in the Teshekpuk Lake Region, Arctic Coastal Plain, Northern Alaska. 15 July 2015.



Kewei Huang (Chinese Academy of Sciences)

A flood occurred during the thaw season at the Fenghuoshan watershed with rainbow over the river (4733 m.a.s.l.). 8 August 2018.



Matthias Fuchs (AWI, Germany)

Sobo-Sise Yedoma cliff in the Lena River Delta, Northeast Siberia, Russia. 7 August 2019.



Kewei Huang (Chinese Academy of Sciences)

Two kiang were chasing during growing season at the Fenghuoshan watershed (4737 m.a.s.l.). 28 July 2017.



Catarina Guerreiro (MARE, Portugal)

Northern Antarctic Peninsula. January 2019.



Catarina Guerreiro (MARE, Portugal)

Northern Antarctic Peninsula. January 2019.



Catarina Guerreiro (MARE, Portugal)

Northern Antarctic Peninsula. January 2019.



Charlotte Haugk (Stockholm University, Sweden)

First Fieldwork of my PhD in Abisko am investigating the release of Hg from thawing permafrost, northern Sweden. September 2020.



Nele Lehmann (Alfred Wegener Institute, Germany)

"One does not have to go into a rainforest to see a colorful landscape, the tundra landscape can be very colorful as well." Iskorasfjellet, Norway. 27 September 2020.

Nele Lehmann (AWI, Germany)

Seeing a herd of reindeer for the first time is an amazing experience!
Iskorasfjellet, Norway. 24 September 2020.





Charlotte Haugk (Stockholm University, Sweden)
Happy cutting peat, Abisko. September 2020.



Charlotte Haugk (Stockholm University, Sweden)
Finding life in northern soils, Abisko. September 2020.



Nele Lehmann (AWI, Germany)
Taking a break from soil coring, Iskorasfjellet, Norway. 27 September 2020.



Anne Morgenstern (AWI, Germany)
Watching Yedoma Ice Complex degrading on Kurungnakh Island, Lena River Delta, Russia. 21 July 2016.



Anne Morgenstern (AWI, Germany)
Polygonal tundra in the Siberian Lena River Delta, Russia. 18 June 2015.



Francesco Malfasi (Università degli studi dell'Insubria, Italy)
Frost hummocks along the south coast of Saunders Island (Falkland Islands). February 2017.

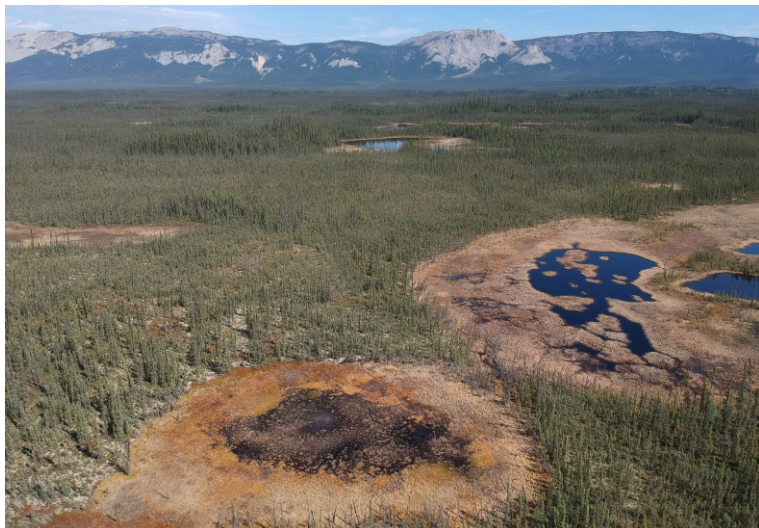


Stefano Ponti (Università degli studi dell'Insubria, Italy)
Cushion of life. Signy Island (Antarctica). A specimen of Antarctic mushroom growing on a cushion of mosses. On the background ice blocks in the bay. 8 March 2018.



Stefano Ponti (Università degli studi dell'Insubria, Italy)

Slippery management. Terra Nova Bay (Antarctica). Setup of a coring zone on the icy surface of a perennially frozen lake. 20 November 2019.



David Olefeldt (University of Alberta, Canada)

Rapidly expanding thermokarst wetlands within a peatland complex, near Wrigley along the Mackenzie River, NT, Canada. 28 May 2019.



David Olefeldt (University of Alberta, Canada)

Rapidly expanding thermokarst pond within a peatland complex, near Wrigley along the Mackenzie River, NT, Canada. 27 May 2019.



David Olefeldt (University of Alberta, Canada)

Active retrogressive thaw slump, Peel plateau along the Dempster Highway, NT, Canada. 14 June 2018.



Stefano Ponti (Università degli studi dell'Insubria, Italy)

The cold heart of Earth. Terra Nova Bay (Antarctica). Operator that drills a borehole into coastal permafrost in front of a glacier terminus. 13 November 2019.



Luwig Jardillier (Université Paris-Saclay)

Thawing of permafrost from a burst pipe, Yakutia, Republic of Sakha, Siberia. August 2019.



Luwig Jardillier (Université Paris-Saclay)

Thawing of permafrost from a burst pipe, Yakutia, Republic of Sakha, Siberia. August 2019.



Luwig Jardillier (Université Paris-Saclay)

Yakutia, Republic of Sakha, Siberia. August 2019.



Richard Trimble (Tetra Tech, Canada)

Massive Ice in foundation excavation, Dawson City, YT, Canada. September 2018.



Chunlin Song (Sichuan University)

Thaw slump and exposed ground ice at Fenghou Mountain in the Qinghai-Tibet Plateau permafrost region, China. 23 October 2020.



Chunlin Song (Sichuan University)

Thaw slump and exposed ground ice at Fenghou Mountain in the Qinghai-Tibet Plateau permafrost region, China. 23 October 2020.



Chunlin Song (Sichuan University)

Thaw slump and exposed ground ice at Fenghou Mountain in the Qinghai-Tibet Plateau permafrost region, China. 23 October 2020.